



KING'S LYNN CONSERVANCY BOARD.

Notice to Mariners No. 01/2025

East Coast of England - The Wash

Approaches to the Wash – Chart BA 108

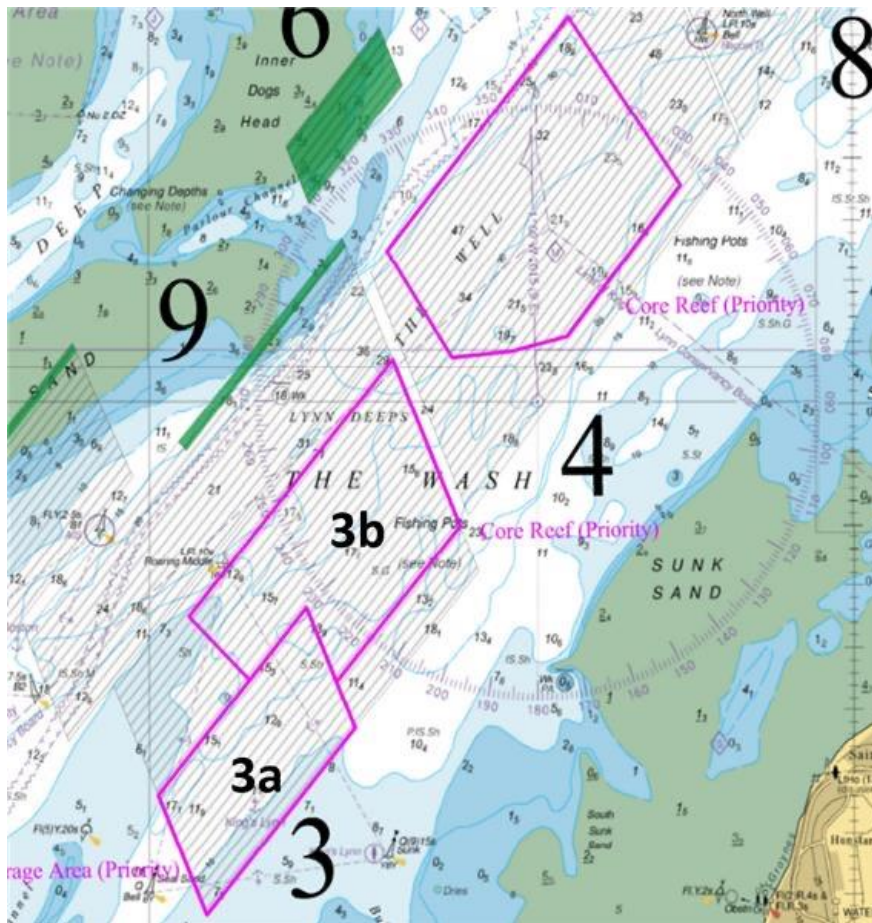
Hydrographic Survey Operations – SV Investigator

Mariners are advised that survey vessel “Investigator” will perform marine survey operations between; -

53°10'5.38"N, 000°22'53.11"E

And

52°54'18.70"N, 000°20'19.87"E



Survey Vessel "Investigator" will be engaged in Survey activities to include towing Sonar equipment circa 30m astern of the vessel.

At this time the vessel will be Restricted in ability to Manoeuvre due to towed equipment. The duration and occasion of the towed operation will vary dependent on conditions and other factors such as survey progress.

Survey operations are expected to commence on 14.01.25 with scheduled completion by 18.01.25, depending on weather conditions. Dates may be subject to change.

The vessel when operational will display appropriate day shapes & lights during survey operations and will actively transmit an AIS signal.

A wide berth is requested at all times as the vessel will be restricted in her ability to manoeuvre.

Contact details for the vessel are as below:-

SV Investigator/ Call Sign MPHN7/ MMSI 235065331.

The vessel will maintain a listening watch on VHF16 and can be contacted to establish comms and confirm movements within the survey area.

14th January 2025.

P. J. Jary.

Harbour Master.

King's Lynn,

Norfolk PE30 1LL

www.kingslynnport.co.uk